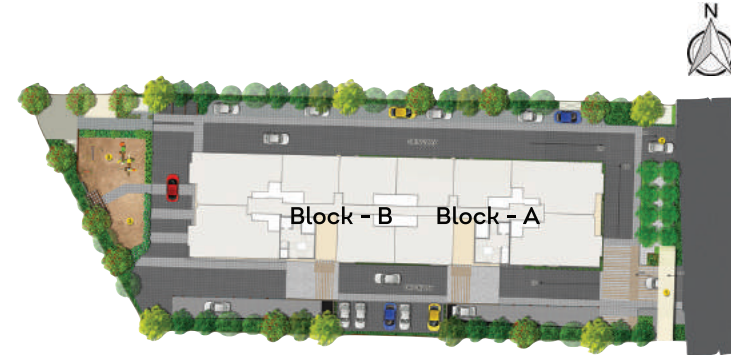


BLOCK PLAN



BLOCK PLAN - A



KEY PLAN



BLOCK PLAN - B

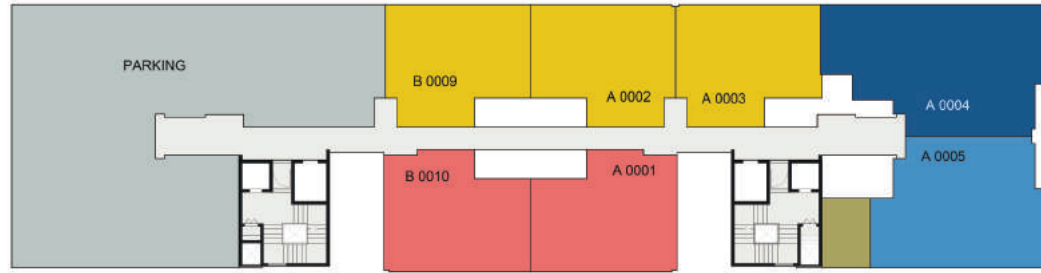


The information depicted herein viz., master plans, floor plans, furniture layout, fittings, illustrations, specifications, designs, dimensions, rendered views, colours, amenities and facilities etc., are subject to change without notifications as may be required by the relevant authorities or the developer's architect, and cannot form part of an offer or contract. Whilst every care is taken in providing this information, the Developer cannot be held liable for variations. All illustrations and pictures are artist's impression only. The information are subject to variations, additions, deletions, substitutions and modifications as may be recommended by the company's architect and/or the relevant approving authorities. The Developer is wholly exempt from any liability on account of any claim in this regard. (1 square metre = 10.764 square feet). E & OE.

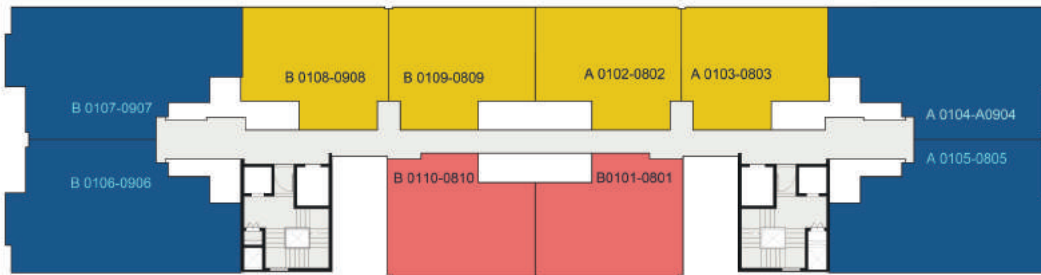
All dimensions and calculations are done in metric system (M/ Sq.m), and imperial system (Ft/ Sq.ft) shown is for reference only.

RERA Reg. No. PRM/KA/RERA/1268/378/PR/200123/003232 • Available at www.rera.karnataka.gov.in

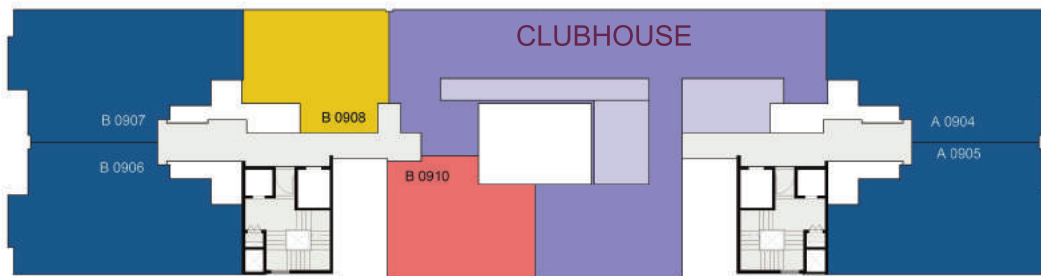
UNIT DISTRIBUTION PLAN



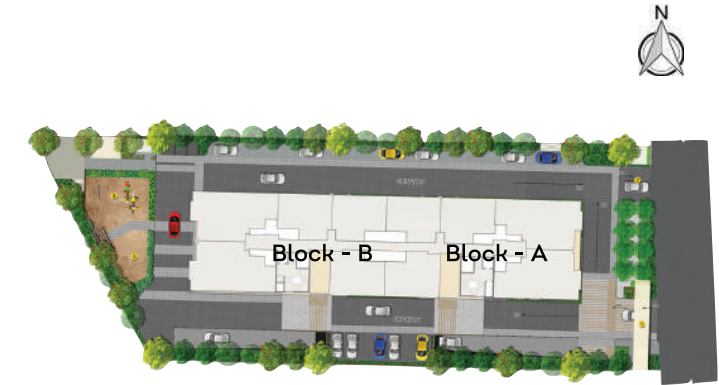
GROUND FLOOR PLAN



TYPICAL FLOOR PLAN (Alternate)



NINTH FLOOR PLAN



KEY PLAN

- TYPE A : 3 BHK UNIT 1539 Sft
- TYPE A1: 2 BHK UNIT 1248 Sft
- TYPE B : 2 BHK UNIT 938 Sft
- TYPE B1 : 2 BHK UNIT 961 Sft

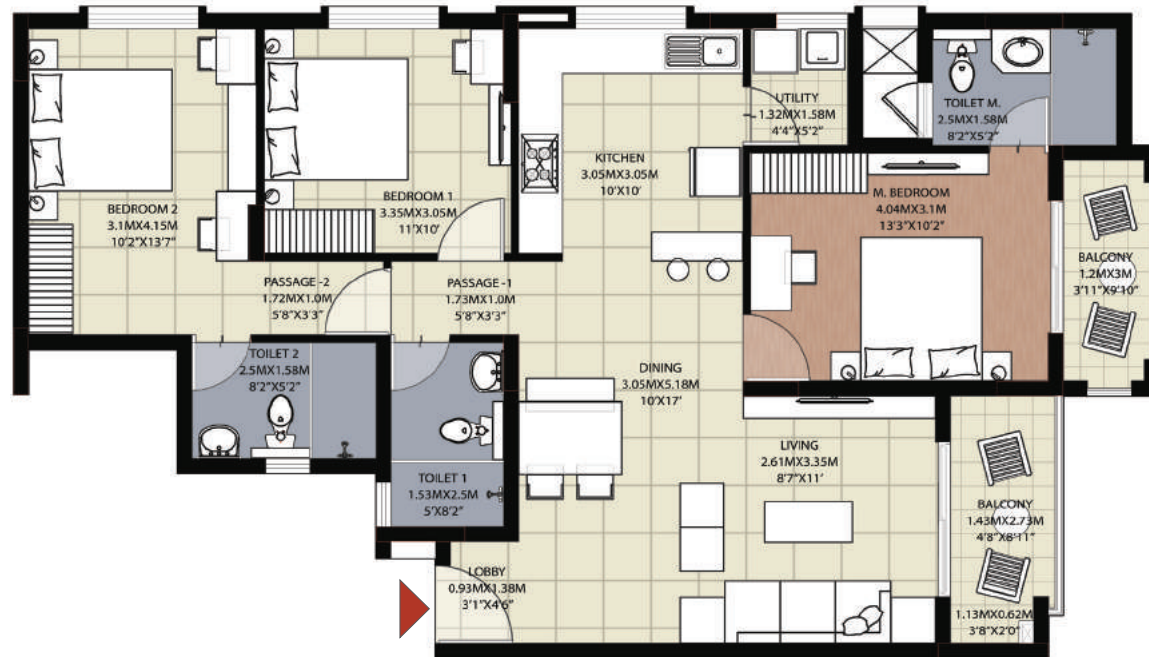
The information depicted herein viz., master plans, floor plans, furniture layout, fittings, illustrations, specifications, designs, dimensions, rendered views, colours, amenities and facilities etc., are subject to change without notifications as may be required by the relevant authorities or the developer's architect, and cannot form part of an offer or contract. Whilst every care is taken in providing this information, the Developer cannot be held liable for variations. All illustrations and pictures are artist's impression only. The information are subject to variations, additions, deletions, substitutions and modifications as may be recommended by the company's architect and/or the relevant approving authorities. The Developer is wholly exempt from any liability on account of any claim in this regard. (1 square metre = 10.764 square feet). E & OE.

All dimensions and calculations are done in metric system (M/ Sq.m), and imperial system (Ft/ Sq.ft) shown is for reference only.

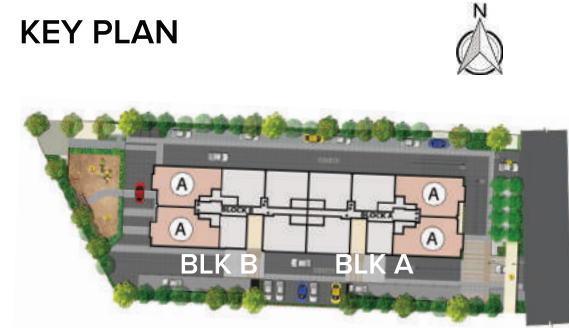
RERA Reg. No. PRM/KA/RERA/1268/378/PR/200123/003232 • Available at www.rera.karnataka.gov.in

TYPE A - 3B+3T

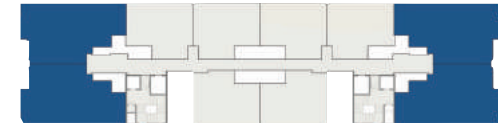
BRIGADE
SAPPHIRE
RING ROAD, MYSURU



KEY PLAN



BLOCK PLAN



SUPER BUILT-UP AREA	CARPET AREA	BALCONY	UNITS
1539 Sq.ft. / 142.97 Sq.m.	964 Sq.ft. / 89.6 Sq.m.	110 Sq.ft. / 10.19 Sq.m.	A 0004 - A 0904, A 0105 - A 0905, B 0106 - B 0906, B 0107 - B 0907

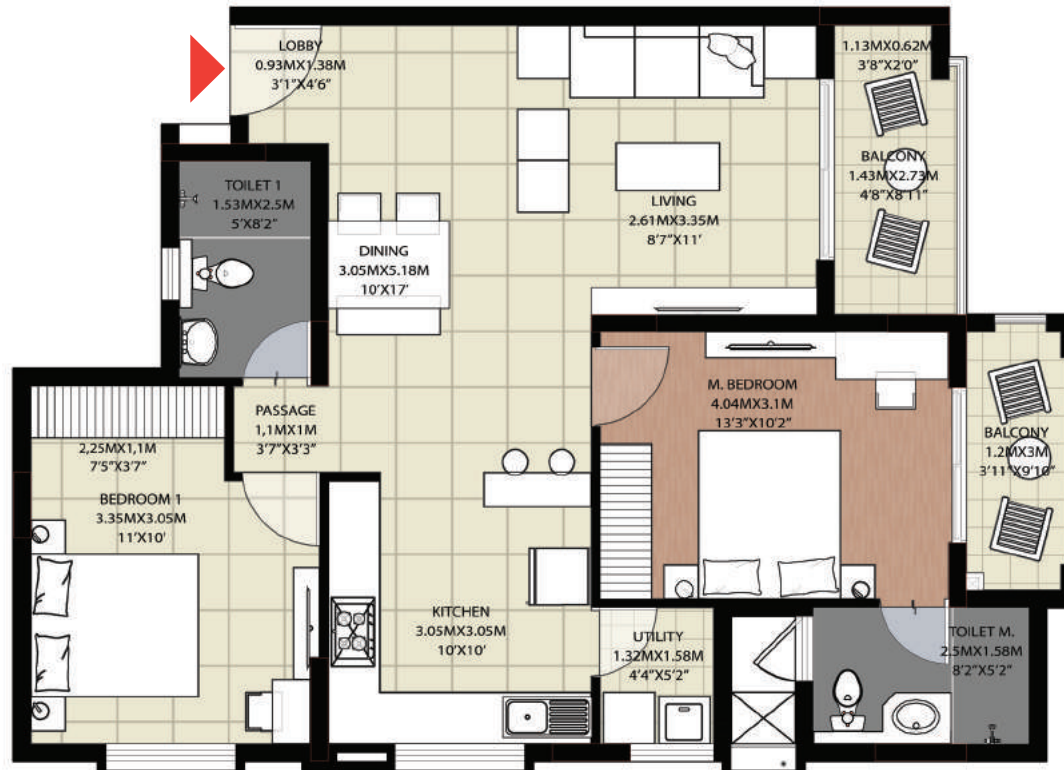
The information depicted herein viz., master plans, floor plans, furniture layout, fittings, illustrations, specifications, designs, dimensions, rendered views, colours, amenities and facilities etc., are subject to change without notifications as may be required by the relevant authorities or the developer's architect, and cannot form part of an offer or contract. Whilst every care is taken in providing this information, the Developer cannot be held liable for variations. All illustrations and pictures are artist's impression only. The information are subject to variations, additions, deletions, substitutions and modifications as may be recommended by the company's architect and/or the relevant approving authorities. The Developer is wholly exempt from any liability on account of any claim in this regard. (1 square metre = 10.764 square feet). E & OE.

All dimensions and calculations are done in metric system (M/ Sq.m), and imperial system (Ft/ Sq.ft) shown is for reference only.

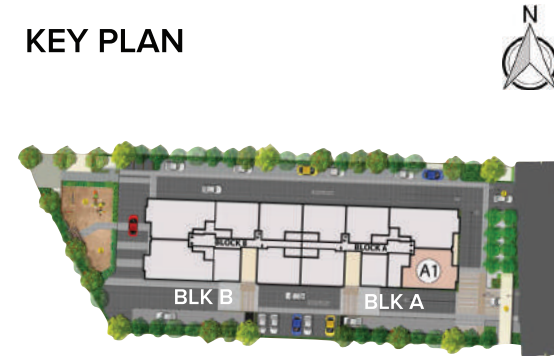
RERA Reg. No. PRM/KA/RERA/1268/378/PR/200123/003232 • Available at www.rera.karnataka.gov.in

TYPE A1 - 2B+2T

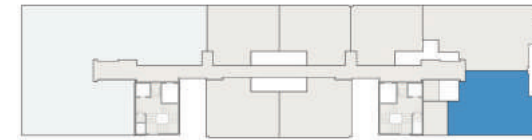
BRIGADE
SAPPHIRE
RING ROAD, MYSURU



KEY PLAN



BLOCK PLAN



SUPER BUILT-UP AREA	CARPET AREA	BALCONY	UNITS
1248 Sq.ft. / 115.99 Sq.m.	753 Sq.ft. / 69.99 Sq.m.	110 Sq.ft. / 10.19 Sq.m.	A 0005

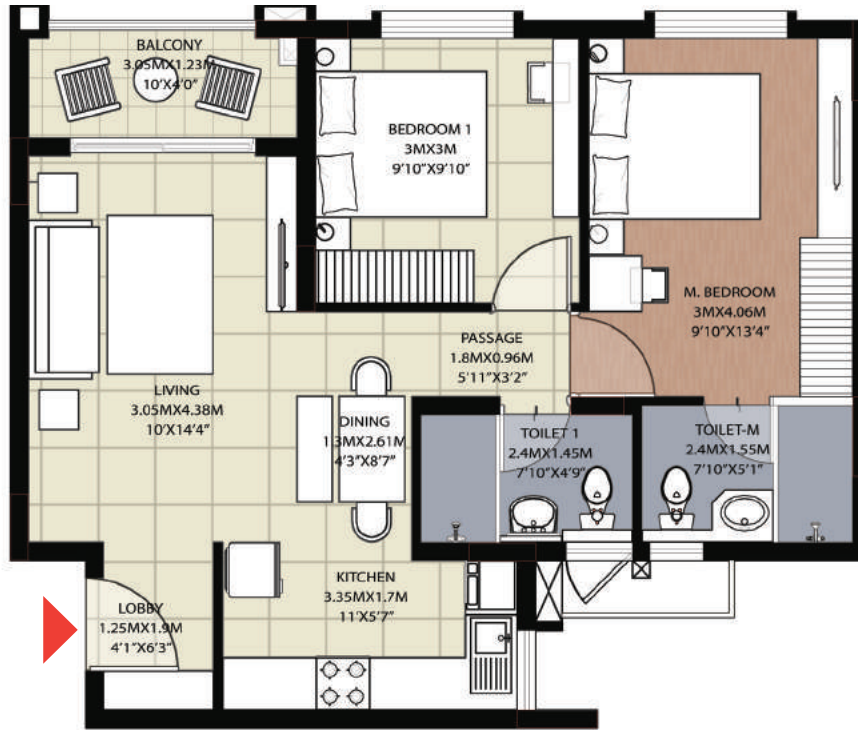
The information depicted herein viz., master plans, floor plans, furniture layout, fittings, illustrations, specifications, designs, dimensions, rendered views, colours, amenities and facilities etc., are subject to change without notifications as may be required by the relevant authorities or the developer's architect, and cannot form part of an offer or contract. Whilst every care is taken in providing this information, the Developer cannot be held liable for variations. All illustrations and pictures are artist's impression only. The information are subject to variations, additions, deletions, substitutions and modifications as may be recommended by the company's architect and/or the relevant approving authorities. The Developer is wholly exempt from any liability on account of any claim in this regard. (1 square metre = 10.764 square feet). E & OE.

All dimensions and calculations are done in metric system (M/ Sq.m), and imperial system (Ft/ Sq.ft) shown is for reference only.

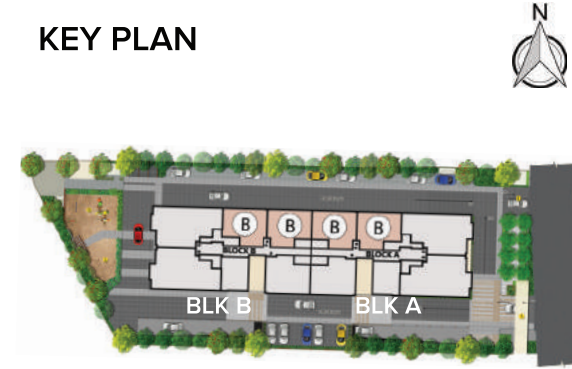
RERA Reg. No. PRM/KA/RERA/1268/378/PR/200123/003232 • Available at www.rera.karnataka.gov.in

TYPE B - 2B+2T

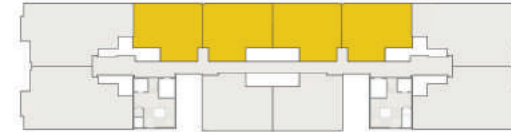
BRIGADE
SAPPHIRE
RING ROAD, MYSURU



KEY PLAN



BLOCK PLAN



SUPER BUILT-UP AREA	CARPET AREA	BALCONY	UNITS
938 Sq.ft. / 87.16 Sq.m.	624 Sq.ft. / 57.99 Sq.m.	39 Sq.ft. / 3.62 Sq.m.	A 0002 - A 0802, A 0003 - A 0803, B 0009 - B 0809, B 0108 - B 0908

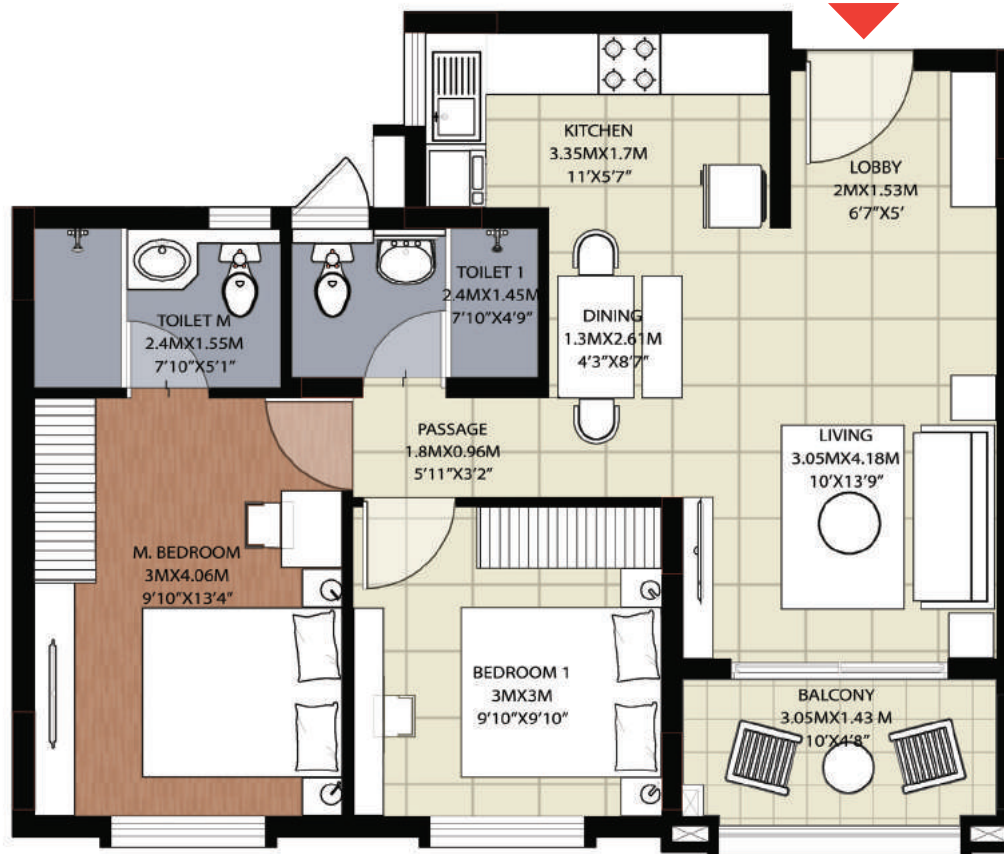
The information depicted herein viz., master plans, floor plans, furniture layout, fittings, illustrations, specifications, designs, dimensions, rendered views, colours, amenities and facilities etc., are subject to change without notifications as may be required by the relevant authorities or the developer's architect, and cannot form part of an offer or contract. Whilst every care is taken in providing this information, the Developer cannot be held liable for variations. All illustrations and pictures are artist's impression only. The information are subject to variations, additions, deletions, substitutions and modifications as may be recommended by the company's architect and/or the relevant approving authorities. The Developer is wholly exempt from any liability on account of any claim in this regard. (1 square metre = 10.764 square feet). E & OE.

All dimensions and calculations are done in metric system (M/ Sq.m), and imperial system (Ft/ Sq.ft) shown is for reference only.

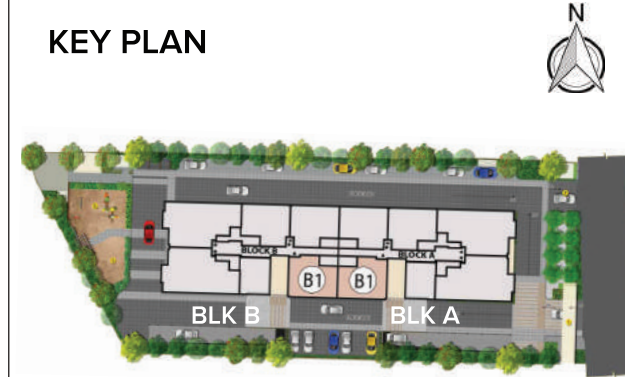
RERA Reg. No. PRM/KA/RERA/1268/378/PR/200123/003232 • Available at www.rera.karnataka.gov.in

TYPE B1 - 2B+2T

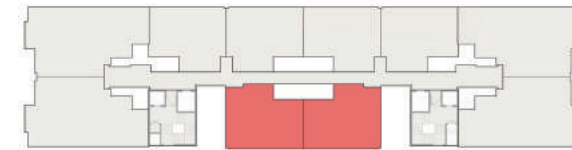
BRIGADE
SAPPHIRE
RING ROAD, MYSURU



KEY PLAN



BLOCK PLAN



SUPER BUILT-UP AREA	CARPET AREA	BALCONY	UNITS
961 Sq.ft. / 89.25 Sq.m.	626 Sq.ft. / 58.16 Sq.m.	45 Sq.ft. / 4.22 Sq.m.	A 0001 - A 0801, B 0010 - B 0910

The information depicted herein viz., master plans, floor plans, furniture layout, fittings, illustrations, specifications, designs, dimensions, rendered views, colours, amenities and facilities etc., are subject to change without notifications as may be required by the relevant authorities or the developer's architect, and cannot form part of an offer or contract. Whilst every care is taken in providing this information, the Developer cannot be held liable for variations. All illustrations and pictures are artist's impression only. The information are subject to variations, additions, deletions, substitutions and modifications as may be recommended by the company's architect and/or the relevant approving authorities. The Developer is wholly exempt from any liability on account of any claim in this regard. (1 square metre = 10.764 square feet). E & OE.

All dimensions and calculations are done in metric system (M/ Sq.m), and imperial system (Ft/ Sq.ft) shown is for reference only.

RERA Reg. No. PRM/KA/RERA/1268/378/PR/200123/003232 • Available at www.rera.karnataka.gov.in